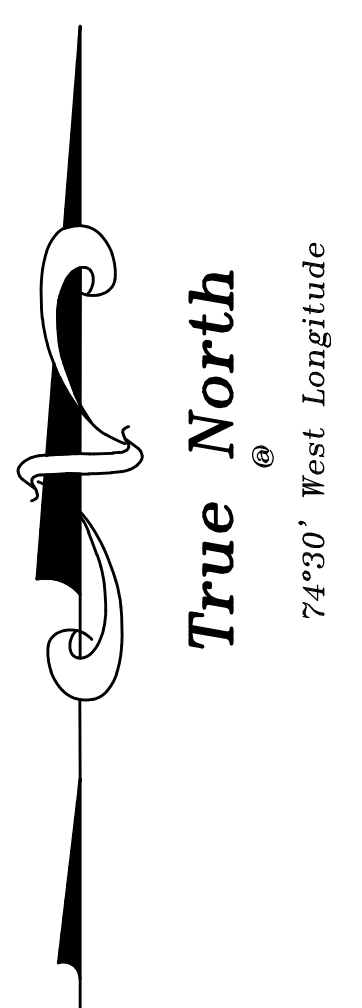
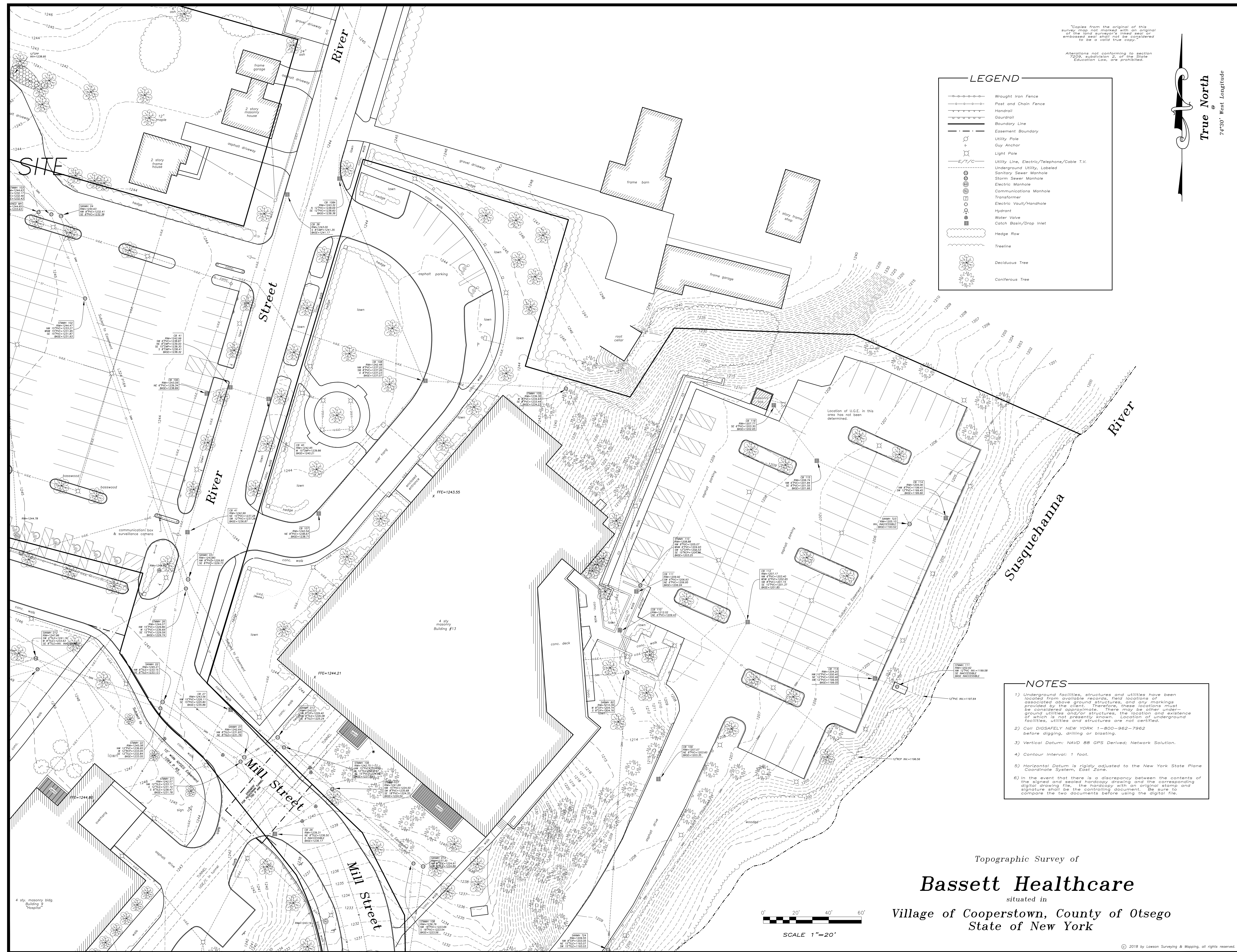


"Copies from the original of this survey map not marked with an original of the land surveyor's inked seal or embossed seal shall not be considered to be a valid true copy."
 Alterations not conforming to section 2209, subdivision 2, of the State Education Law, are prohibited.



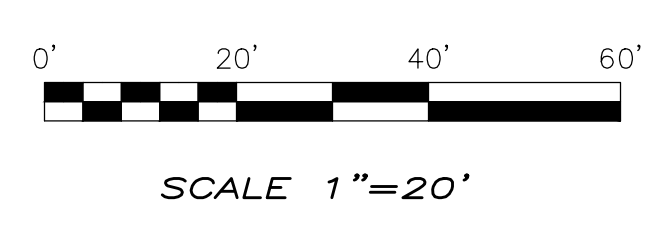
LEGEND

	Wrought iron Fence
	Post and Chain Fence
	Handrail
	Boundary Line
	Easement Boundary
	Utility Pole
	Guy Anchor
	Light Pole
	Utility Line, Electric/Telephone/Cable T.V.
	Underground Utility, Labeled
	Sanitary Sewer Manhole
	Storm Sewer Manhole
	Electric Manhole
	Communications Manhole
	Transformer
	Electric Vault/Handhole
	Hydrant
	Water Valve
	Catch Basin/Drop Inlet
	Hedge Row
	Treeline
	Deciduous Tree
	Coniferous Tree



NOTES

- 1) Underground facilities, structures and utilities have been located from available records, field locations or associated above ground structures, and any markings provided by the client. Therefore, these locations must be considered approximate. There may be other underground utilities and/or structures, the location and existence of which is not presently known. Location of underground facilities, utilities and structures are not certified.
- 2) Call DIGSAFELY NEW YORK 1-800-962-7962 before digging, drilling or blasting.
- 3) Vertical Datum: NAVD 88 GPS Derived; Network Solution.
- 4) Contour Interval: 1 foot.
- 5) Horizontal Datum is rigidly adjusted to the New York State Plane Coordinate System, East Zone.
- 6) In the event that there is a discrepancy between the contents of the signed and sealed hardcopy drawing and the corresponding digital drawing file, the hardcopy with an original stamp and signature shall be the controlling document. Be sure to compare the two documents before using the digital file.

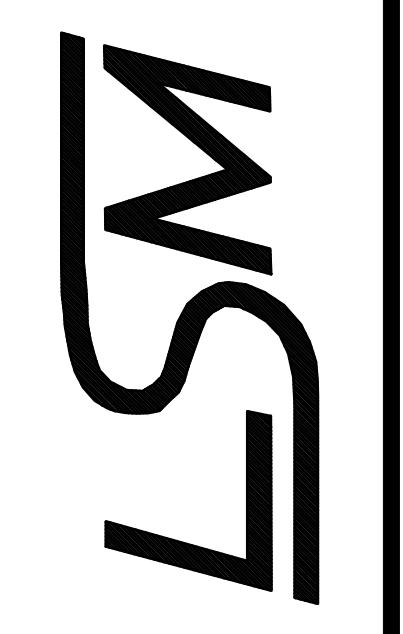


Topographic Survey of
Bassett Healthcare
 situated in
 Village of Cooperstown, County of Otsego
 State of New York

REVISIONS

No.	Date	Description

LAWSON SURVEYING & MAPPING
 Boundary - Topographic - Control - Information - Construction - G.I.S. - Subdivision - G.P.S.
 2959 County Route 6 • Oneonta, New York 13820
 Phone: (807) 435-3900
 Facsimile: (807) 435-5613
 www.lawsonny.com



Robert J. Lawson, L.S.
 N.Y.S. License No.: 050086
 DATE: November 21, 2017
 W.O. No.: 6500
 SCALE: 1 inch = 20 feet
 DRAWN BY: J.D.J.
 CHECKED BY: R.J.L.
 FIELD CHECKED BY: J.D.J.
 DWG FILE: 6000 OVERALL 2018.DWG
 MAP No.: M 30-322
 SHEET No.: 9 of 10